



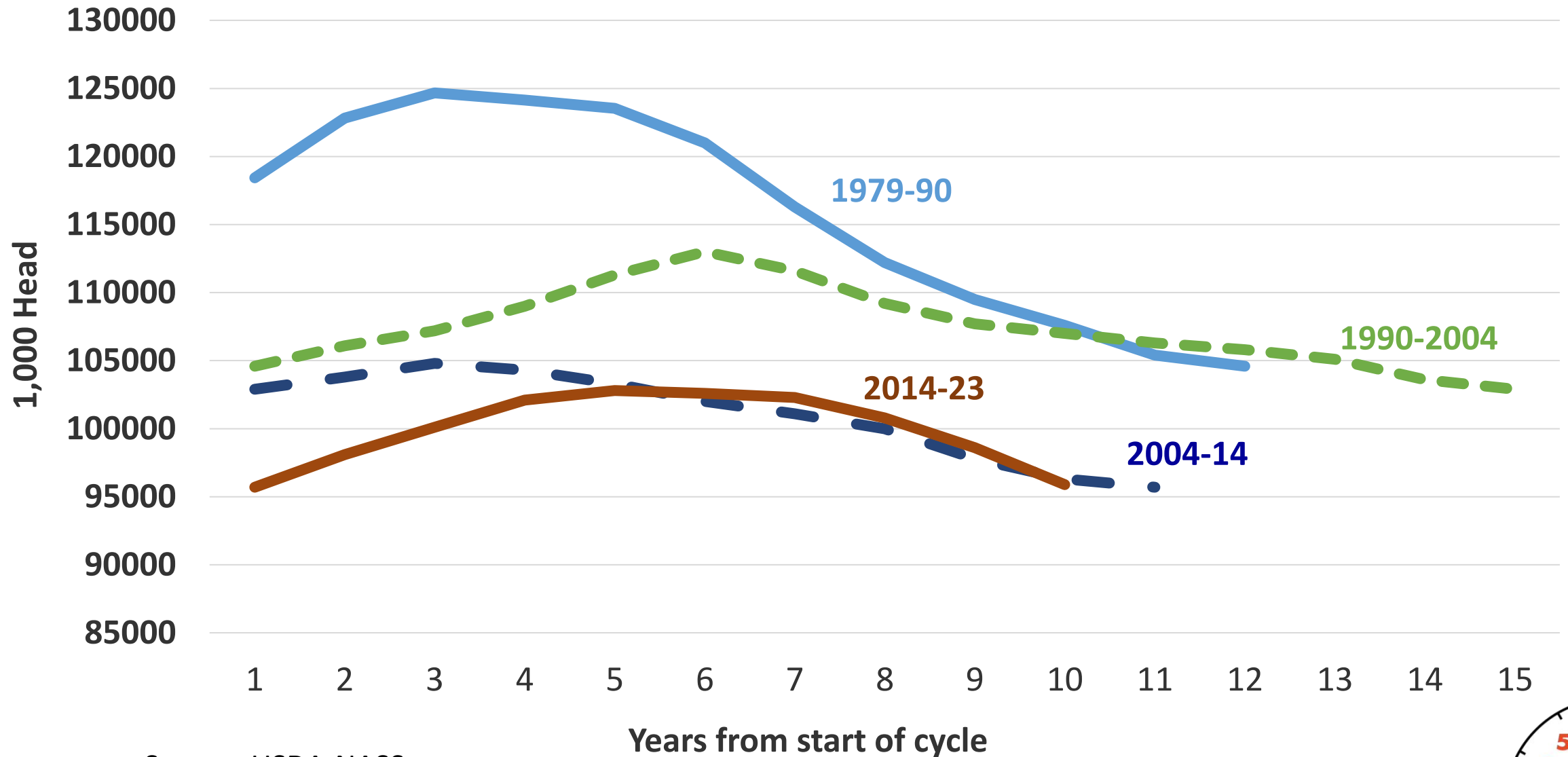
# Still Cutting the Cowherd

**Jason Franken**  
School of Agriculture  
Western Illinois University  
July 24, 2023

**farmdocDAILY**



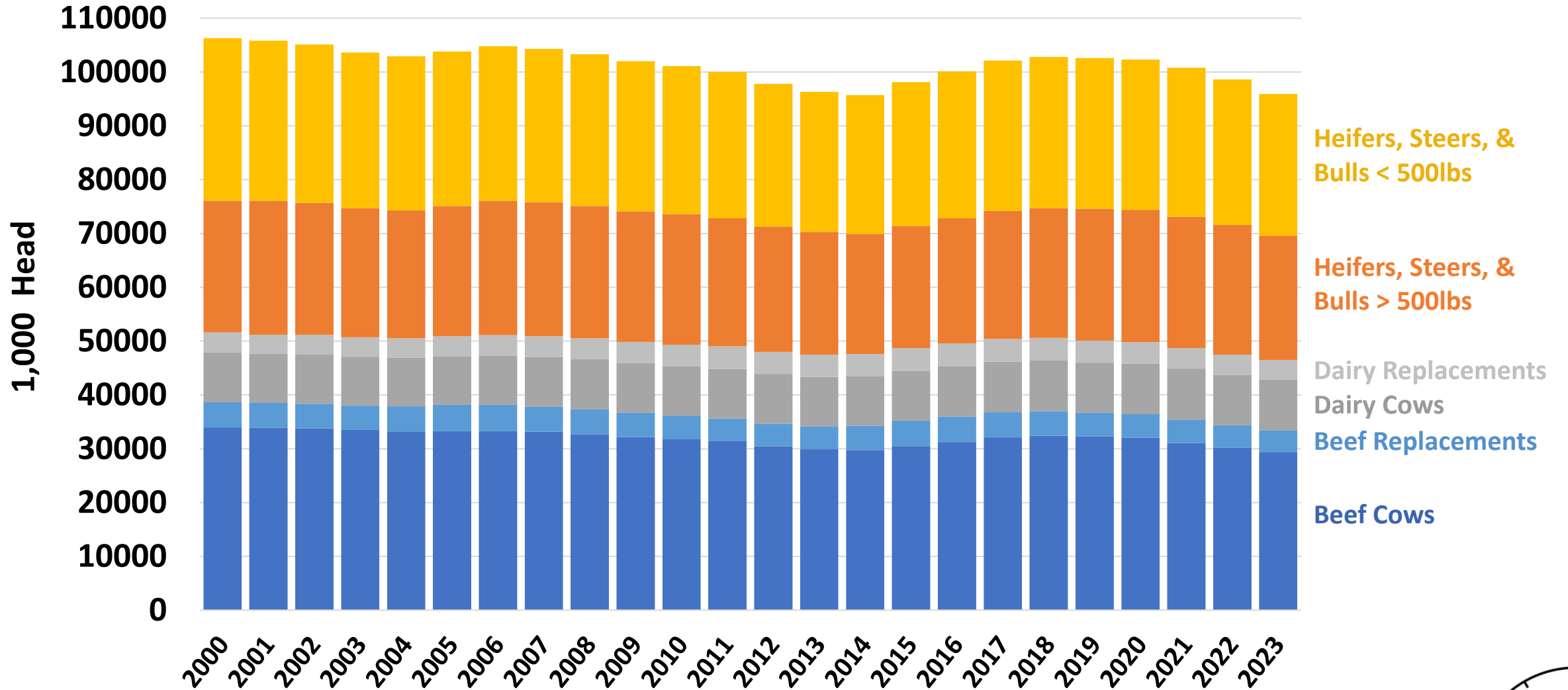
# July 1 Inventory of Cattle & Calves in U.S. by Cycles



Source: USDA-NASS



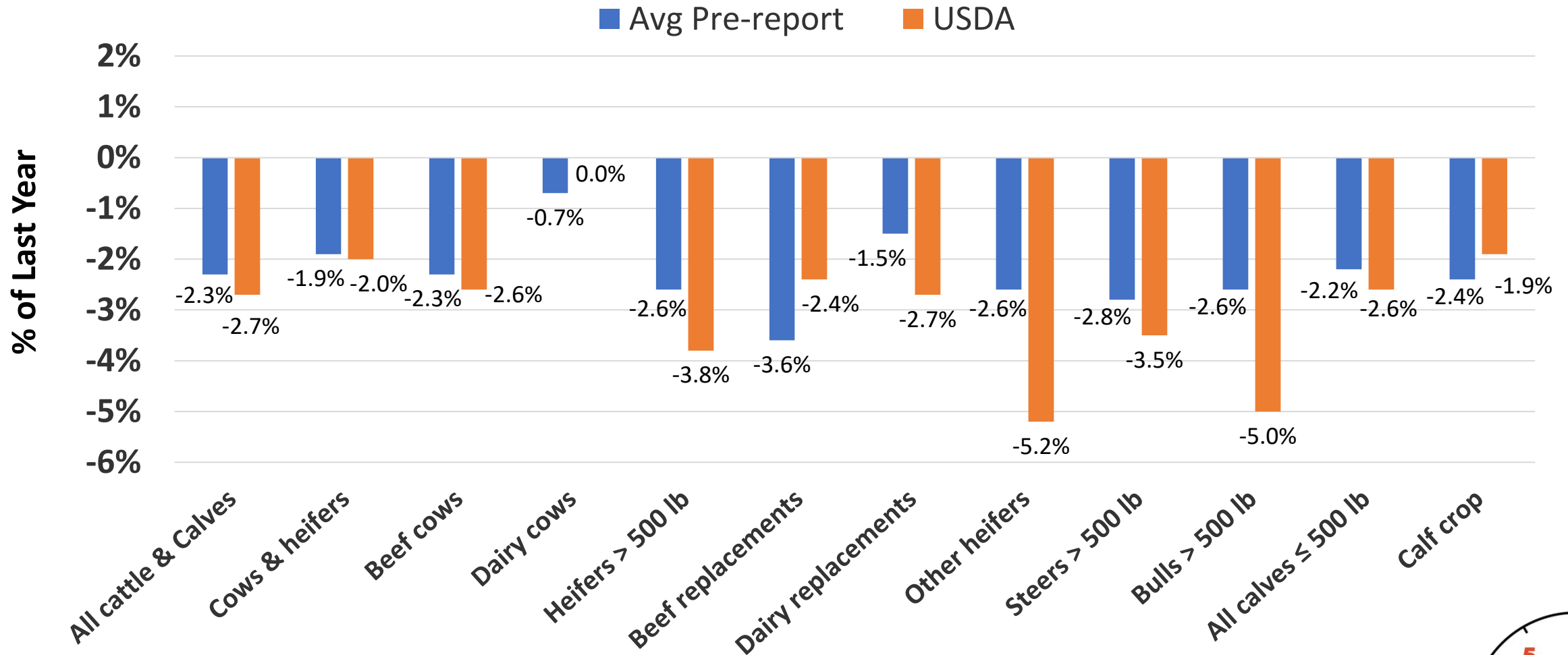
# July 1 Inventory of Cattle & Calves in U.S.



Source: USDA-NASS



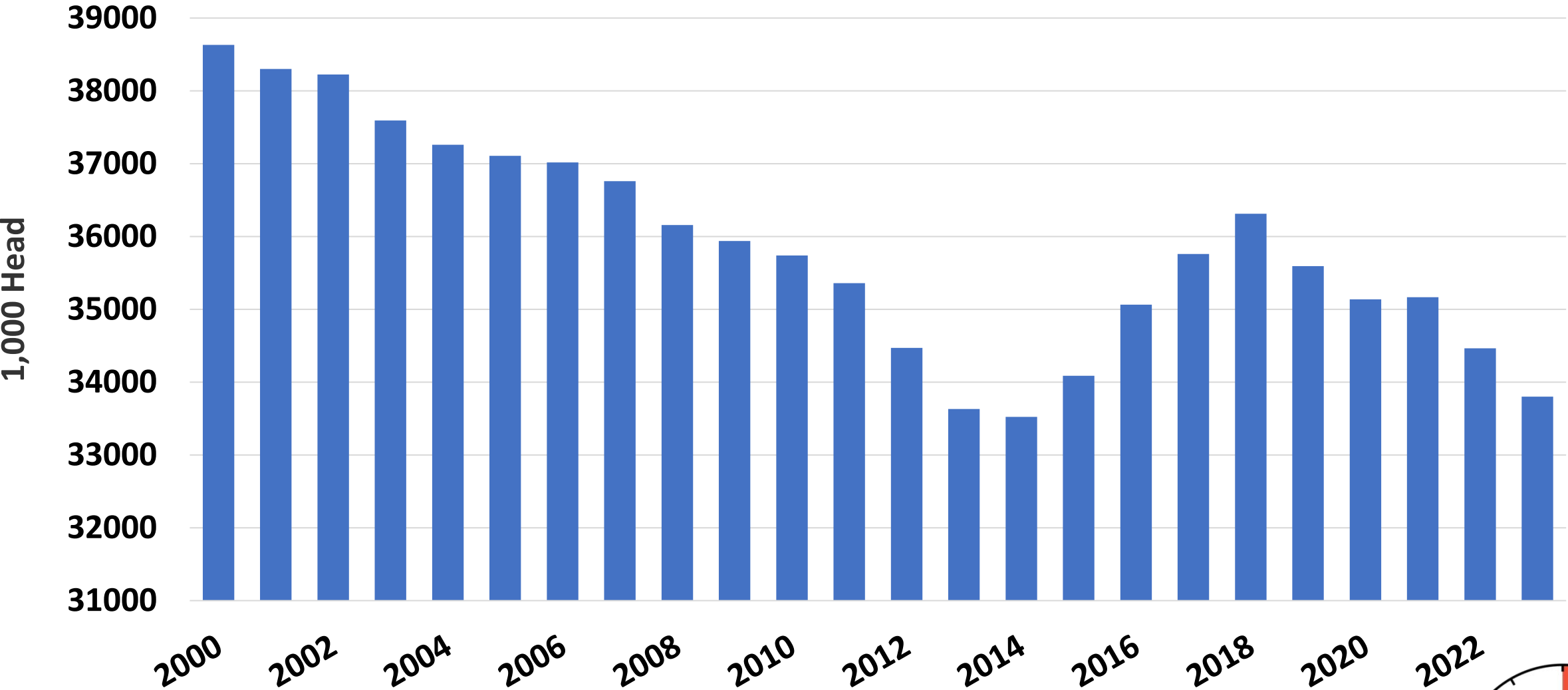
# USDA vs. Pre-Report Estimates



Source: USDA-NASS



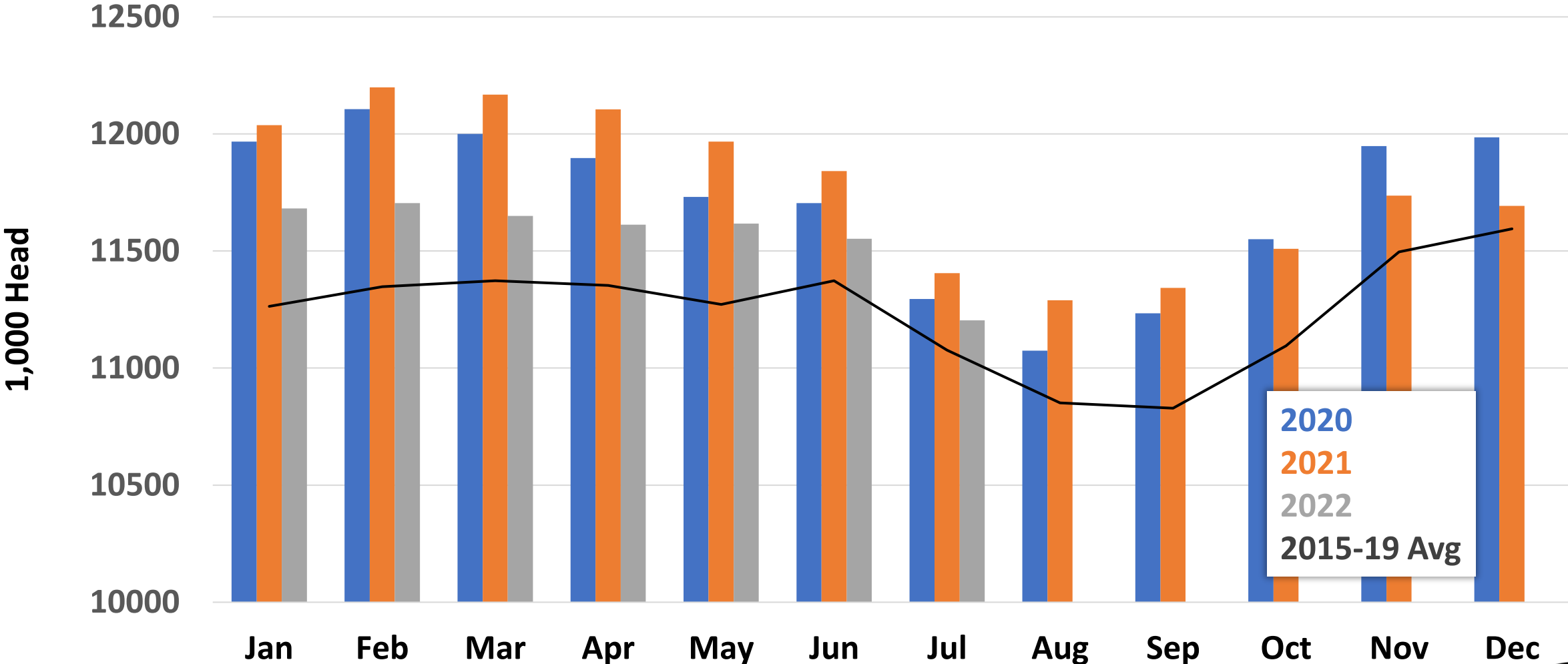
# U.S. Calf Crop



Source: USDA-NASS



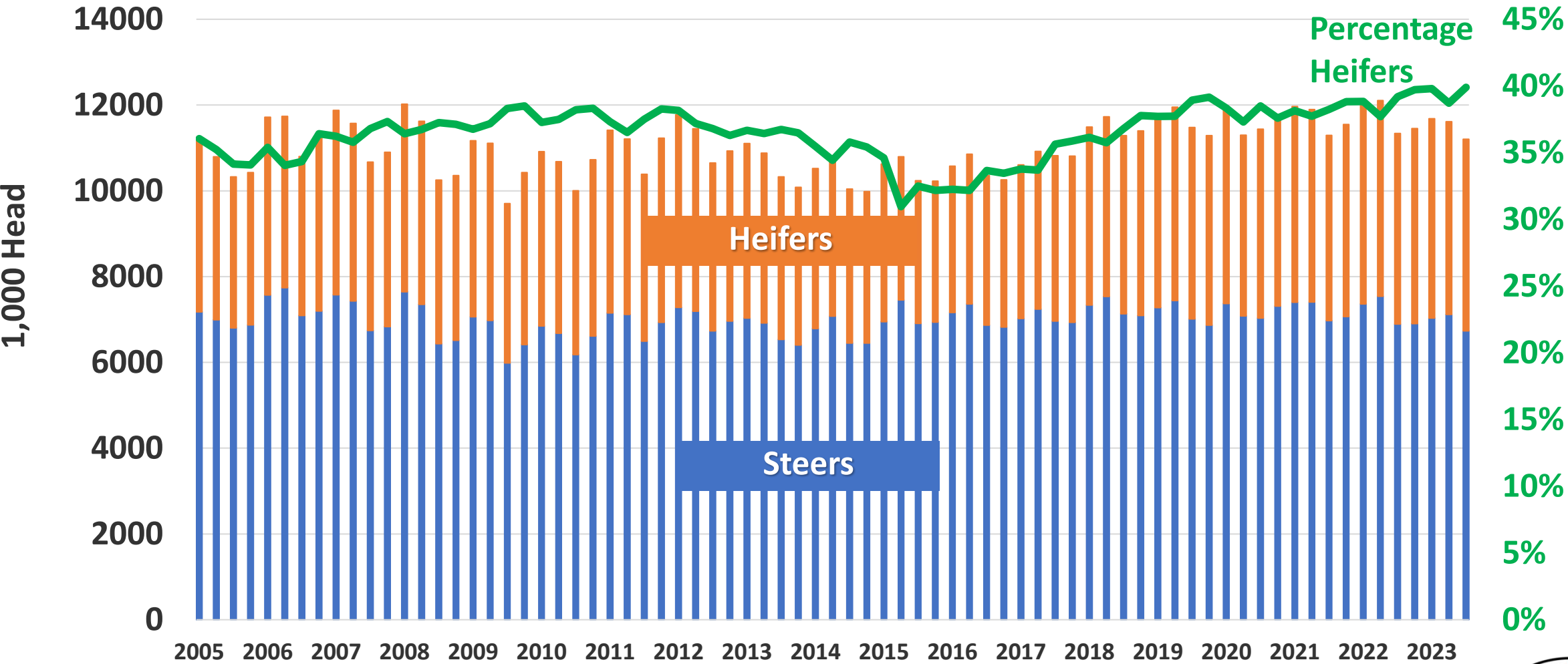
# Cattle on Feed in 1,000+ Capacity Feedlots



Source: USDA-NASS



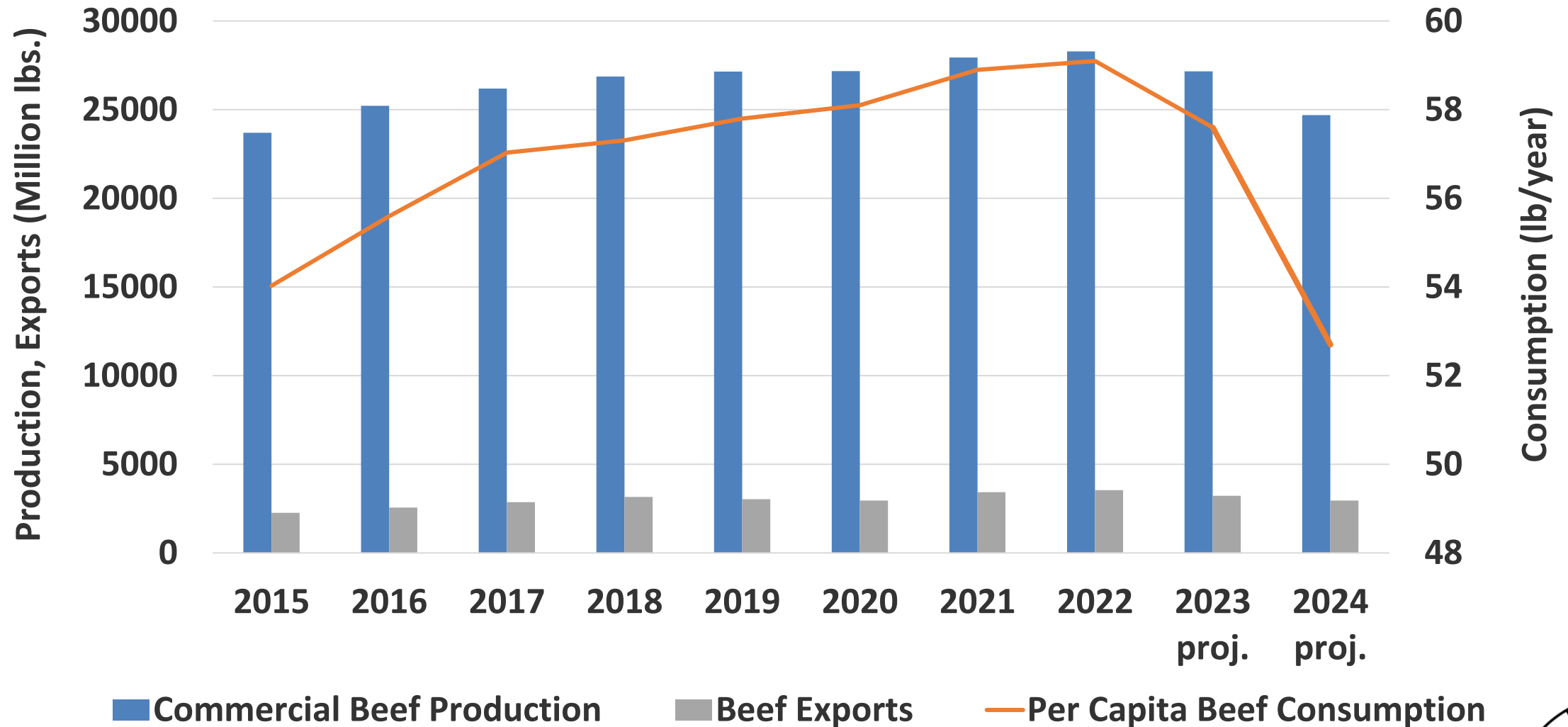
# Cattle on Feed in 1,000+ Capacity Feedlots



Source: USDA-NASS



# U.S. Beef Production & Disappearance

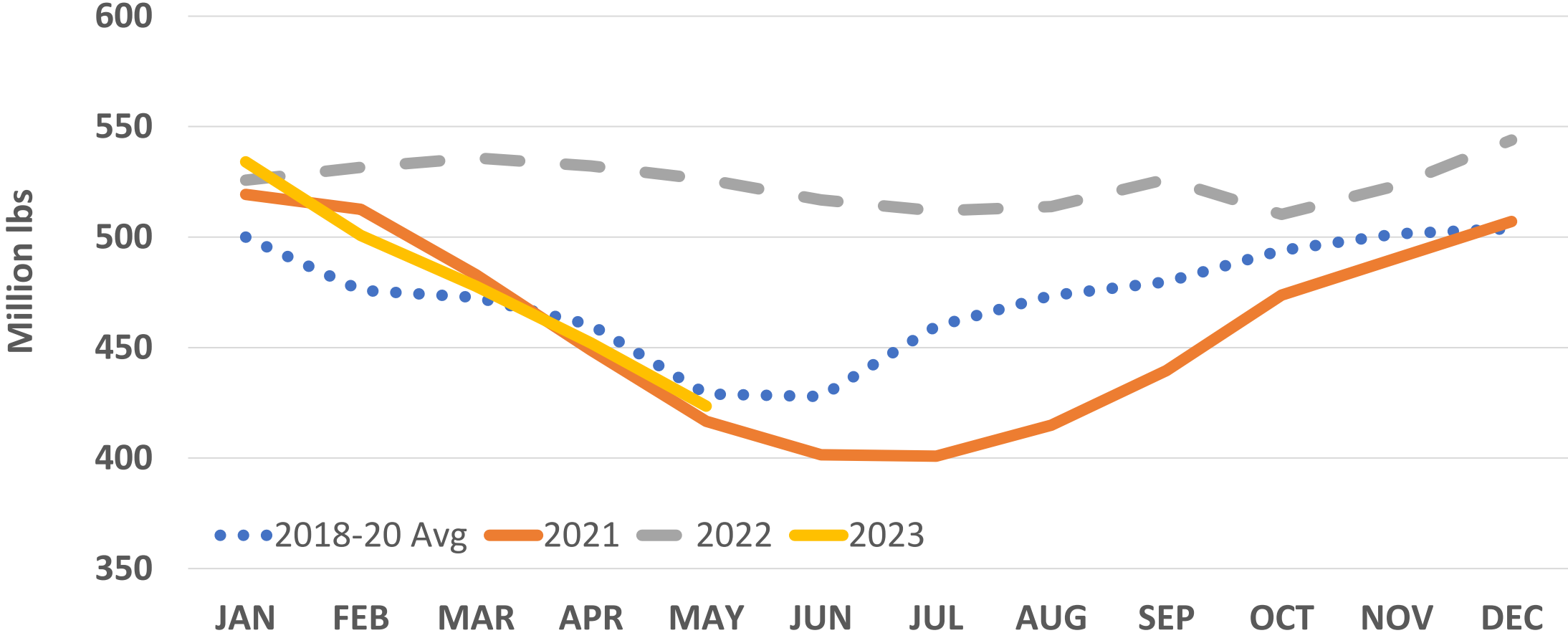


Source: USDA-ERS





# U.S. Frozen Stocks of Beef at End of Month

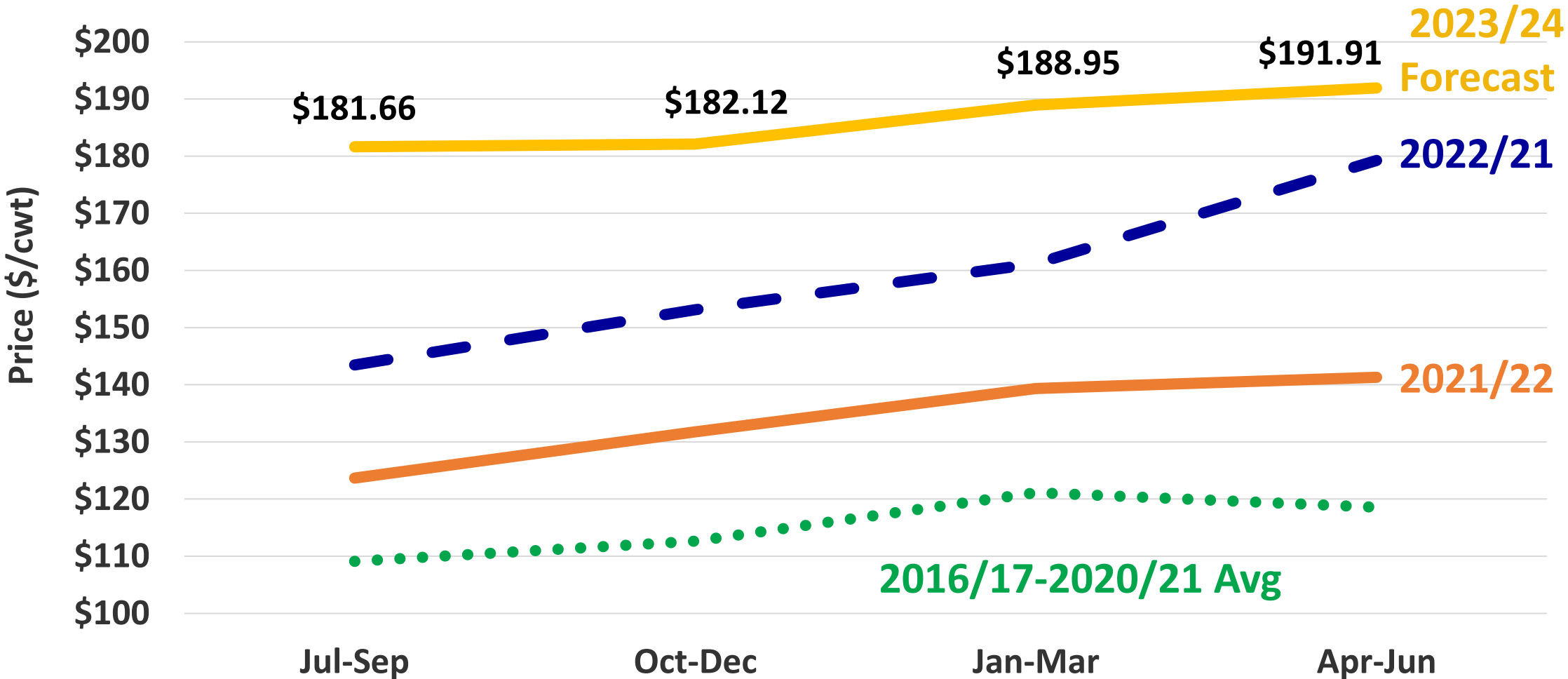


Source: USDA-NASS



# Quarterly Average Slaughter Steer Price

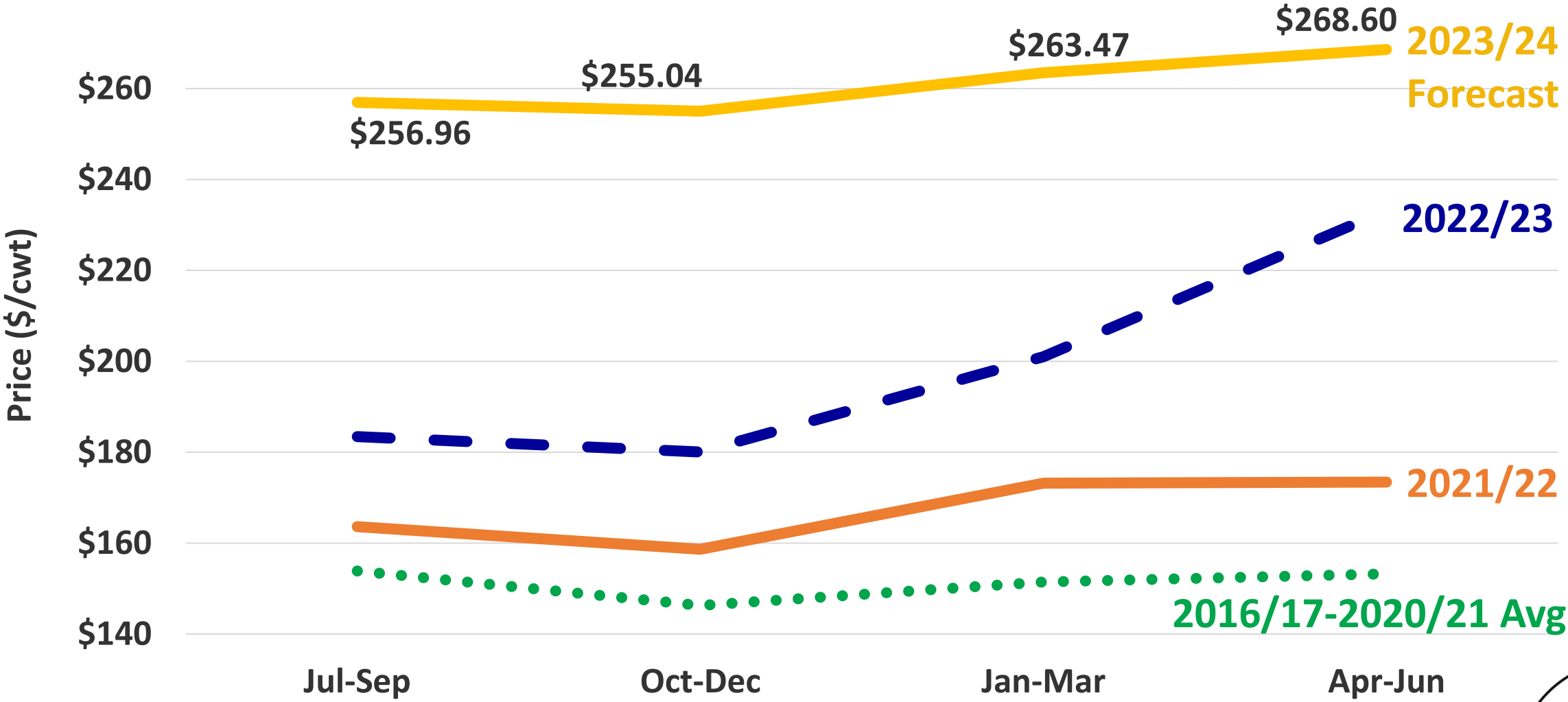
## 5 Market Weighted Average



Source: USDA-AMS



# Quarterly Average Feeder Steer Price, 600-700 lb Southern Plains



Source: USDA-AMS

