



How Big is the U.S. Cattle Herd?

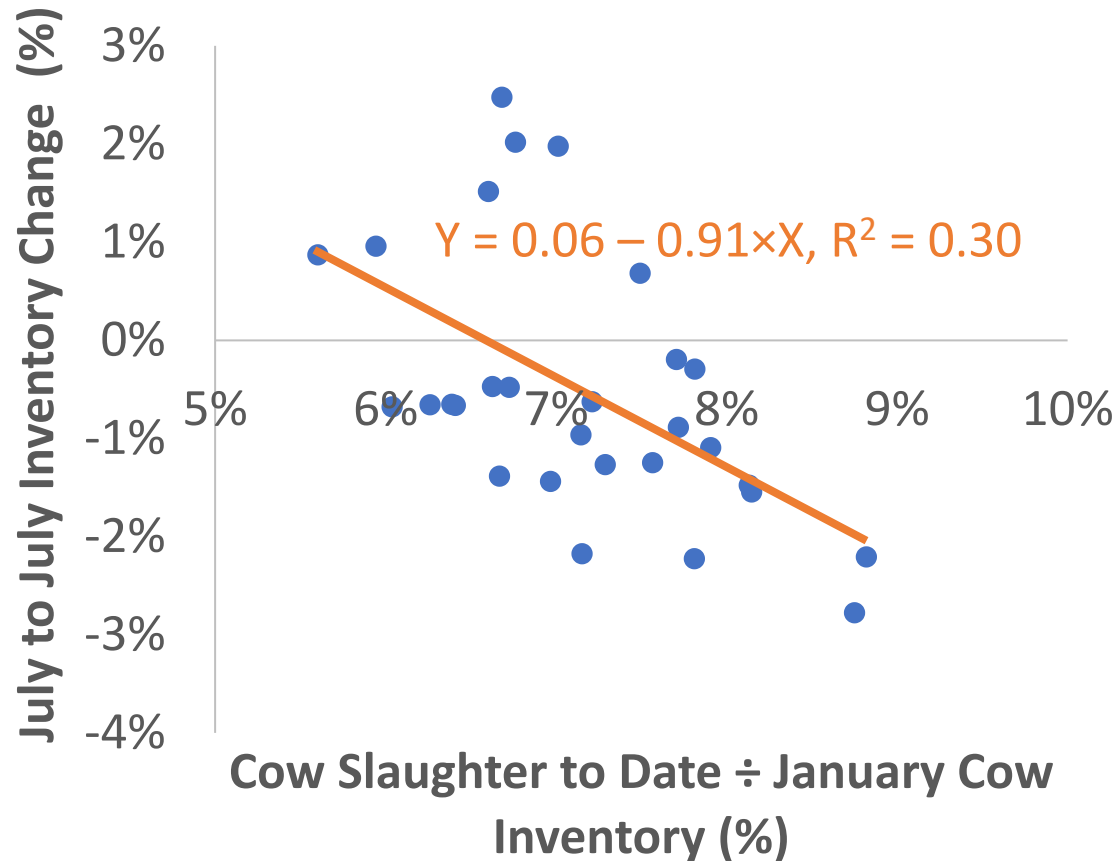
Jason Franken
School of Agriculture
Western Illinois University
July 25, 2024

farmdocDAILY

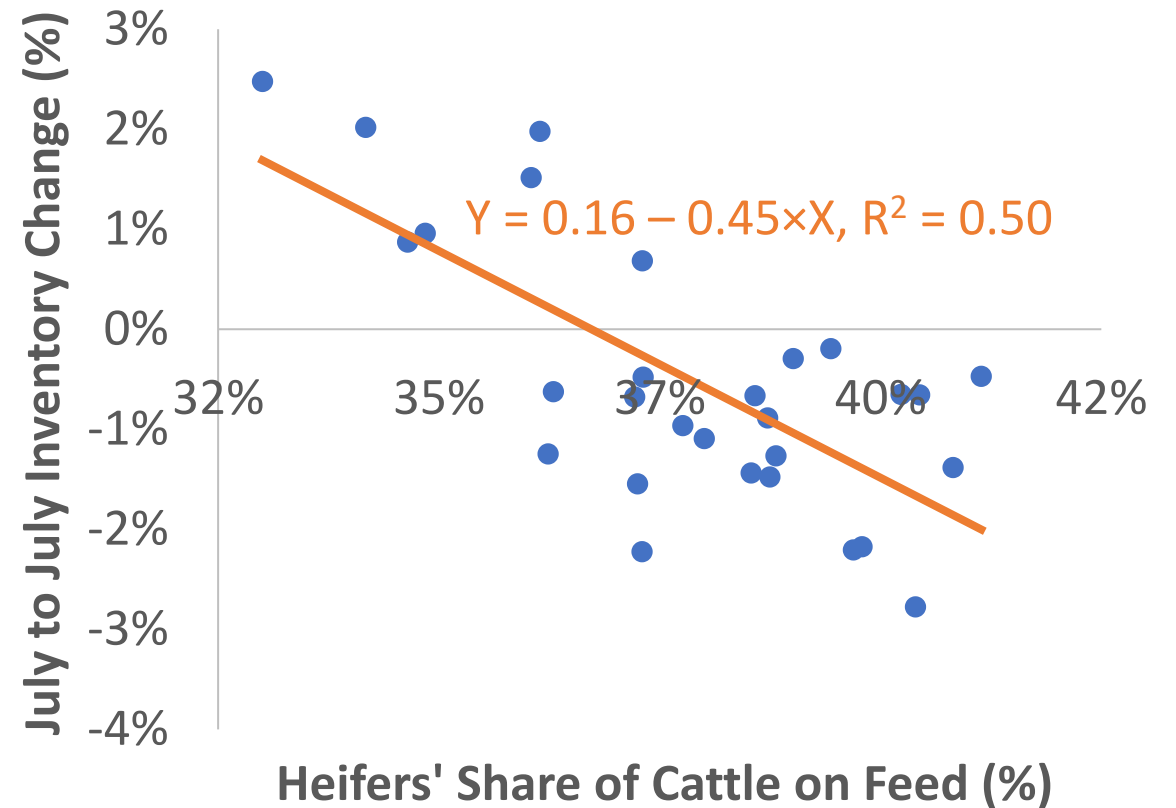


Estimating Total Inventory

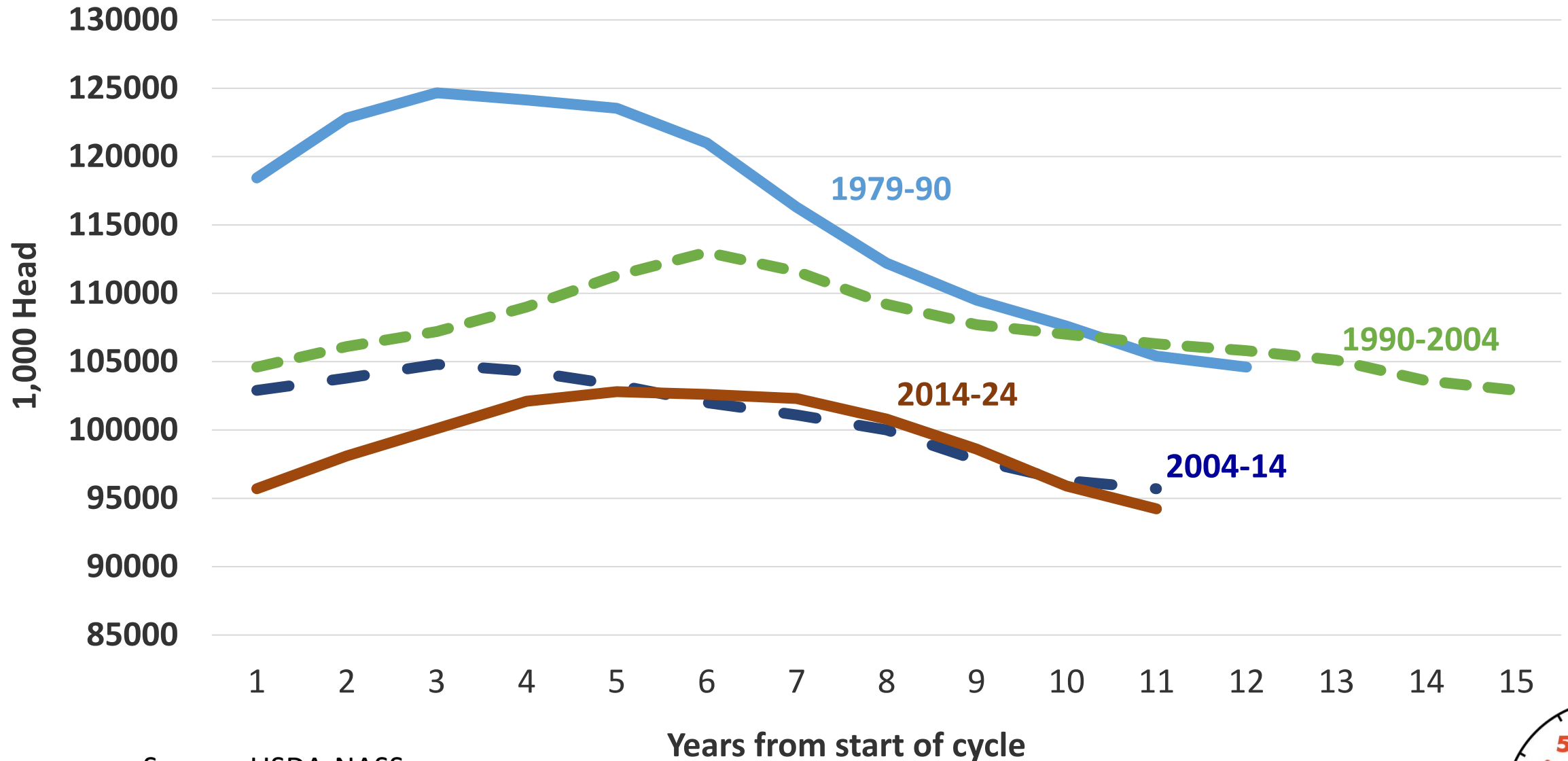
July to July Inventory Change vs. Share of Cows Slaughtered



July to July Inventory Change vs. Heifers' Share of Cattle on Feed



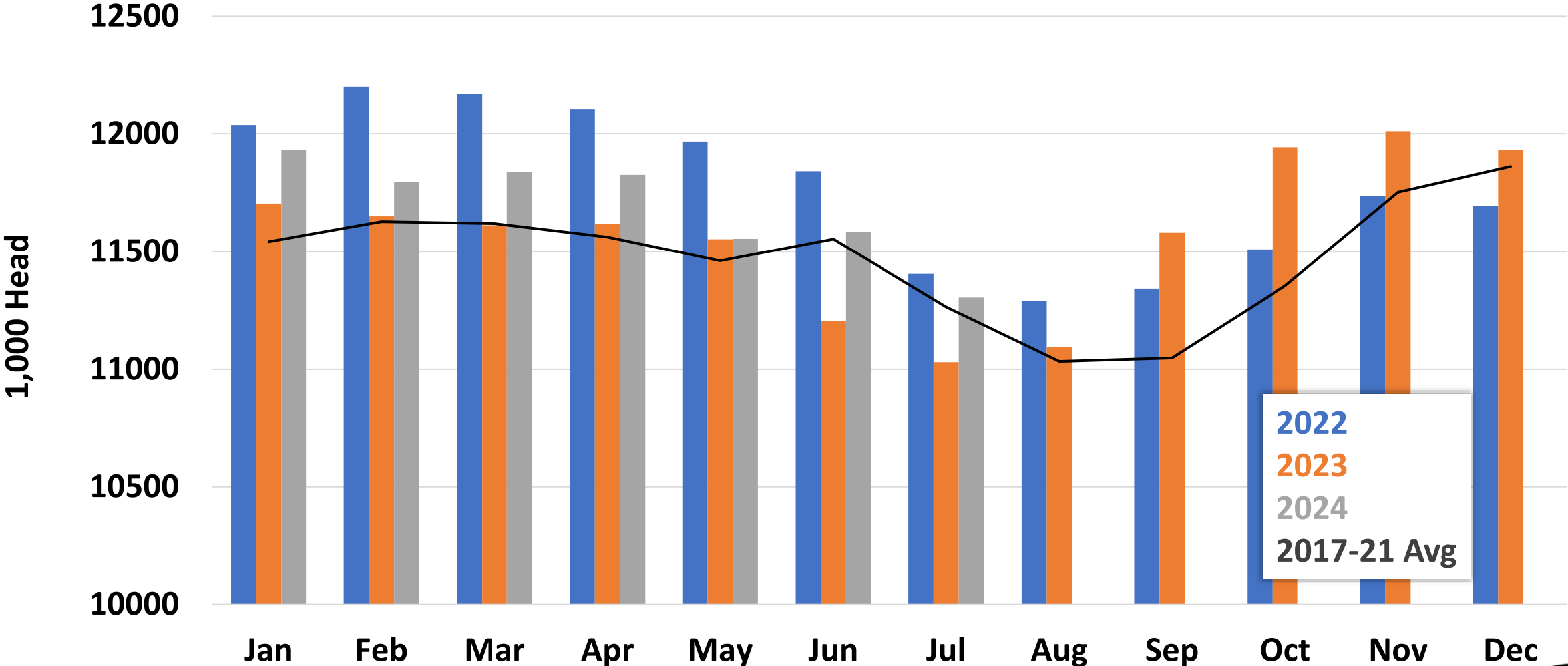
July 1 Inventory of Cattle & Calves in U.S. by Cycles



Source: USDA-NASS



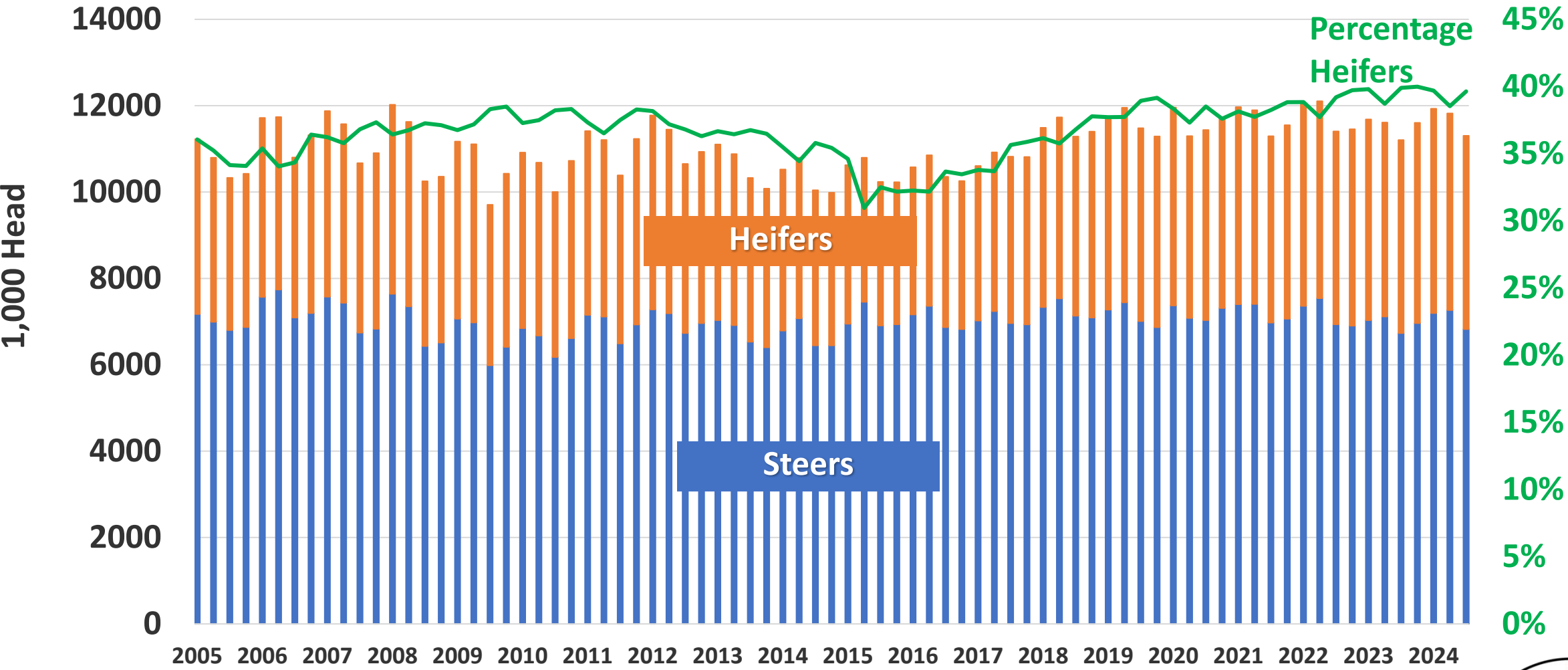
Cattle on Feed in 1,000+ Capacity Feedlots



Source: USDA-NASS



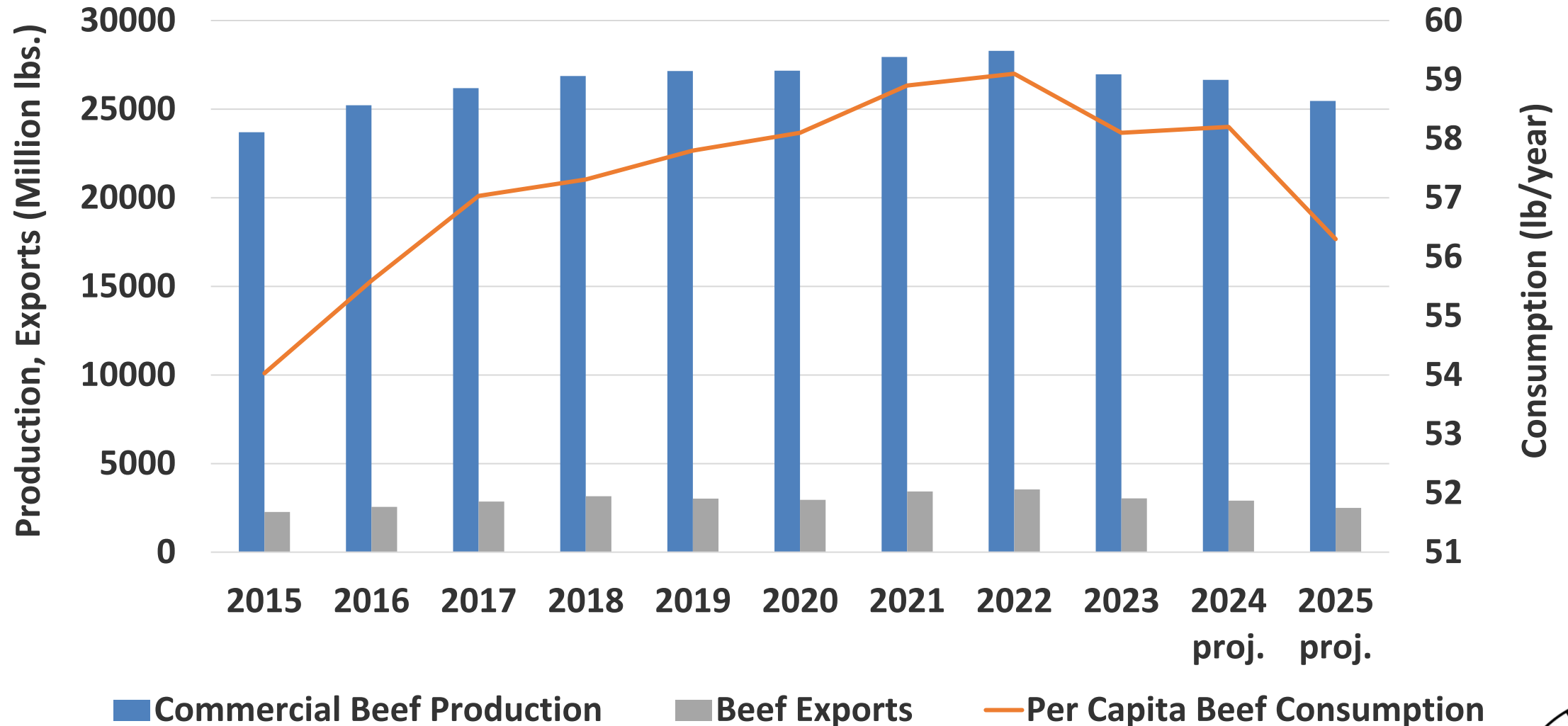
Cattle on Feed in 1,000+ Capacity Feedlots



Source: USDA-NASS



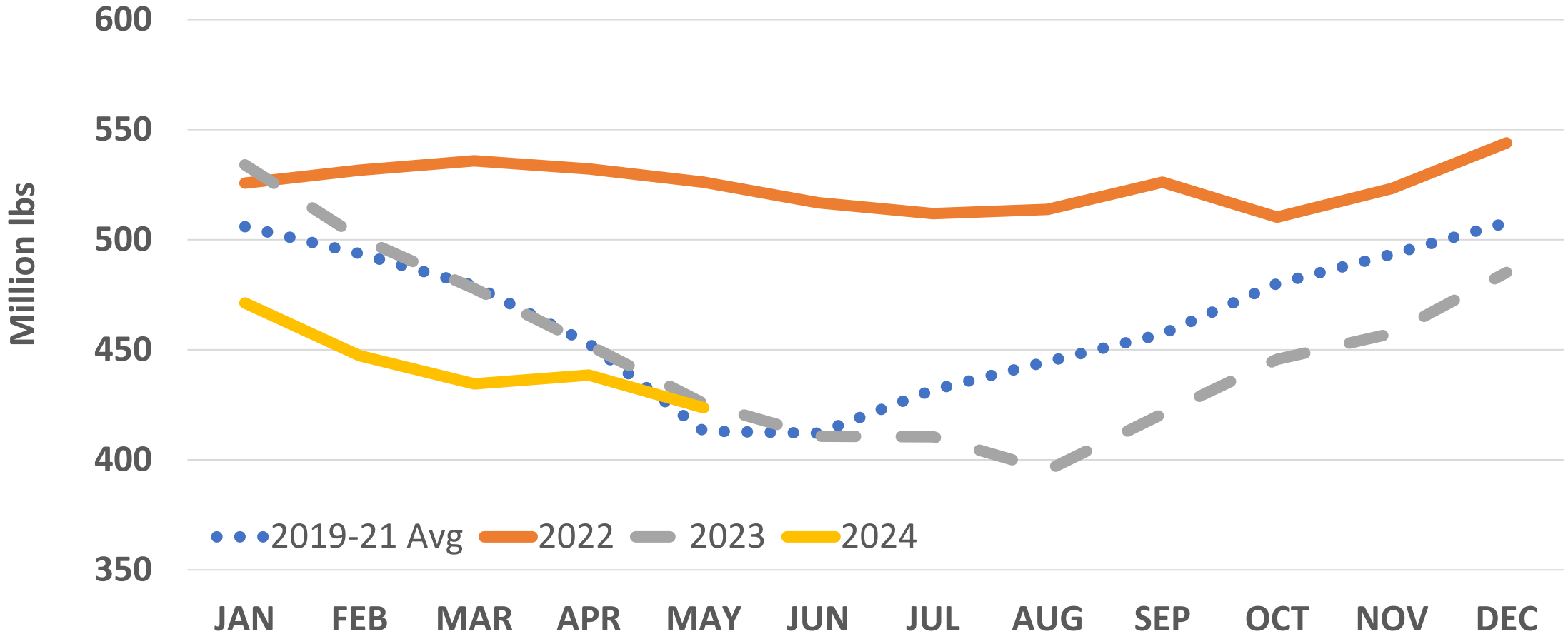
U.S. Beef Production & Disappearance



Source: USDA-ERS



U.S. Frozen Stocks of Beef at End of Month

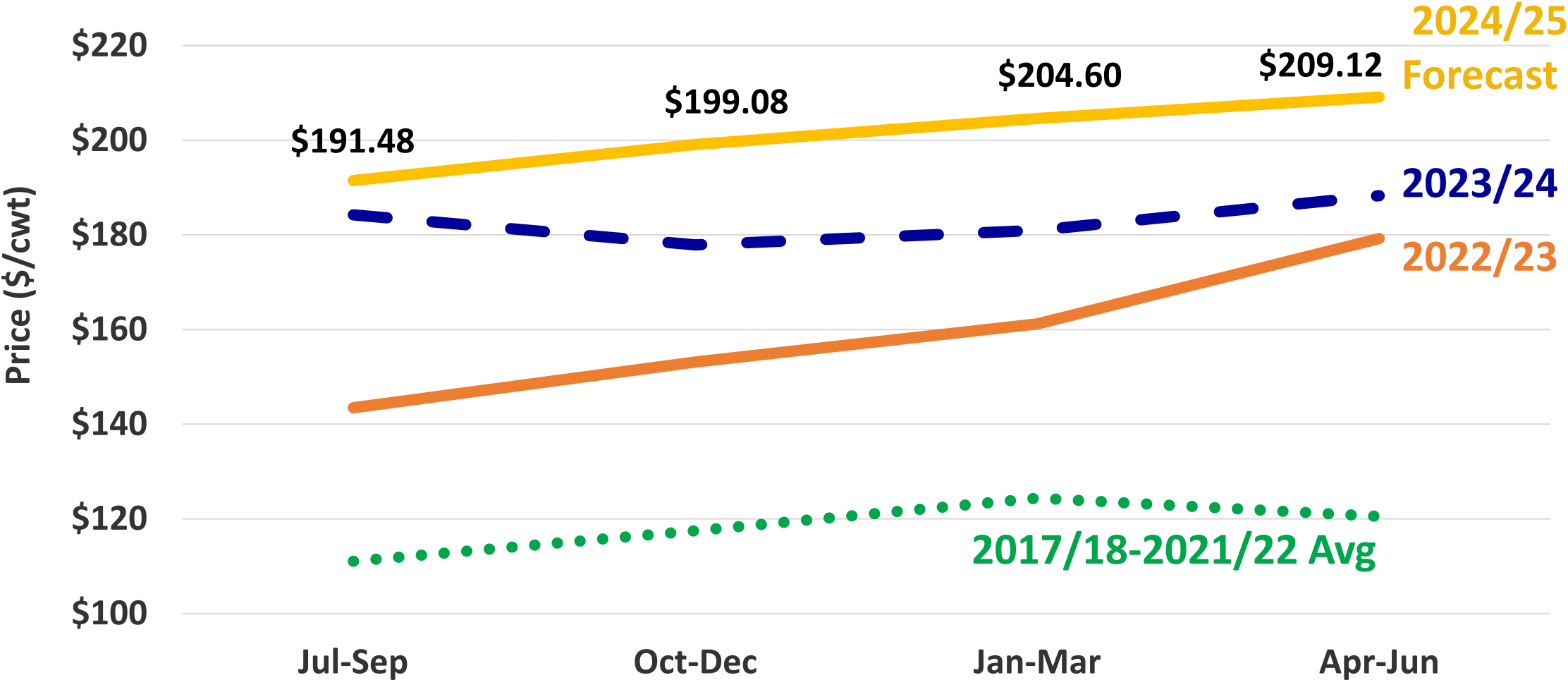


Source: USDA-NASS



Quarterly Average Slaughter Steer Price

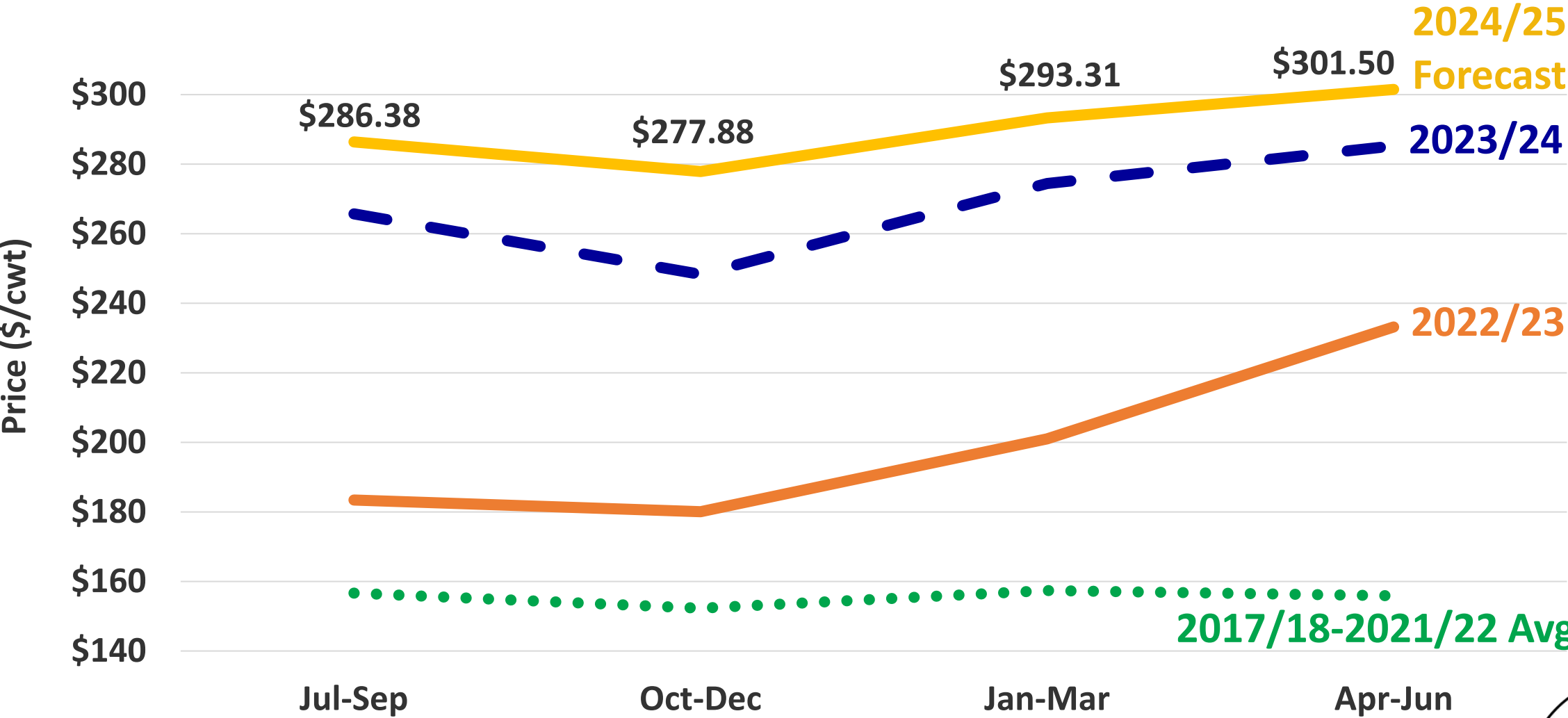
5 Market Weighted Average



Source: USDA-AMS



Quarterly Average Feeder Steer Price, 600-700 lb Southern Plains



Source: USDA-AMS

