

Continued Contraction Supports Record Prices



Jason Franken

Division of Applied Social Sciences

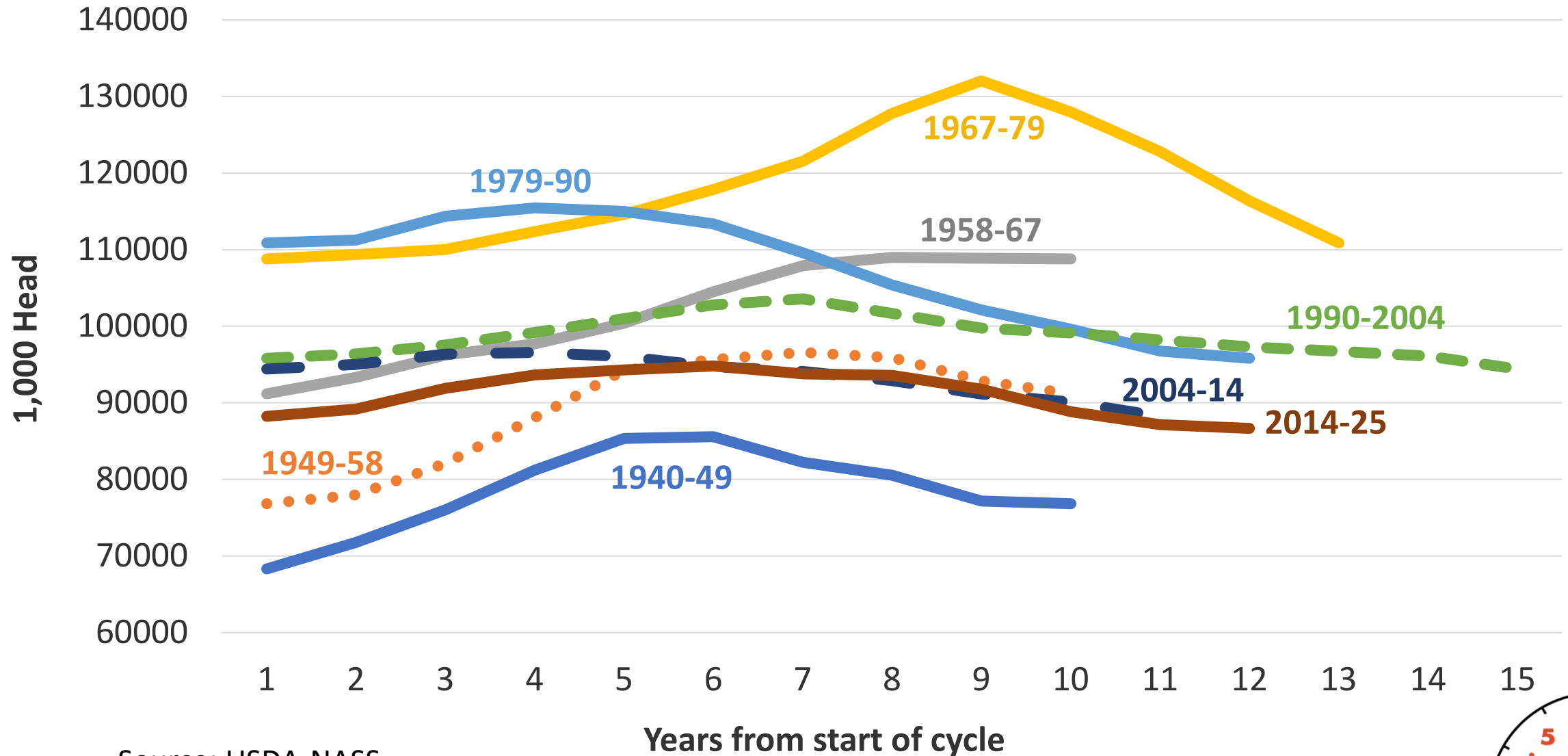
University of Missouri

February 3, 2025

farmdocDAILY



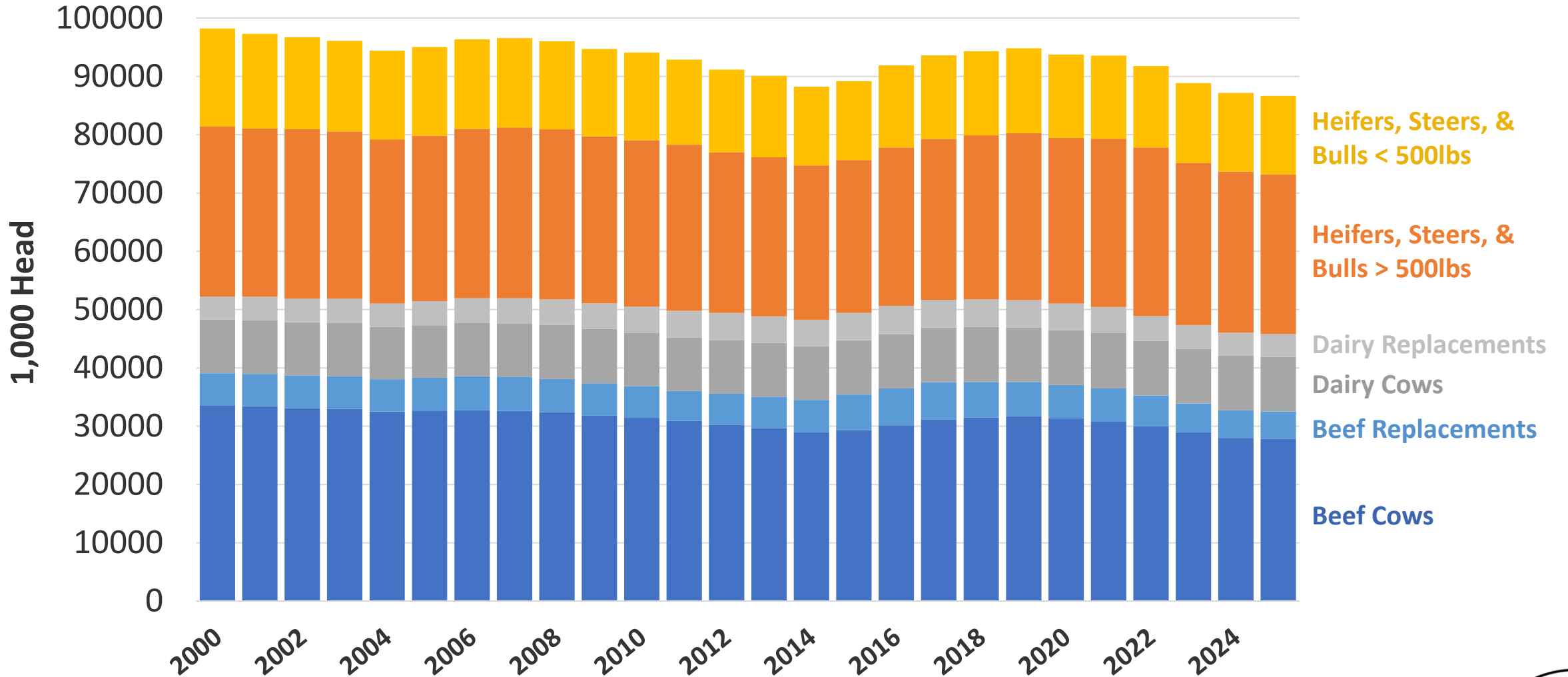
January 1 Inventory of Cattle & Calves in U.S. by Cycles



Source: USDA-NASS



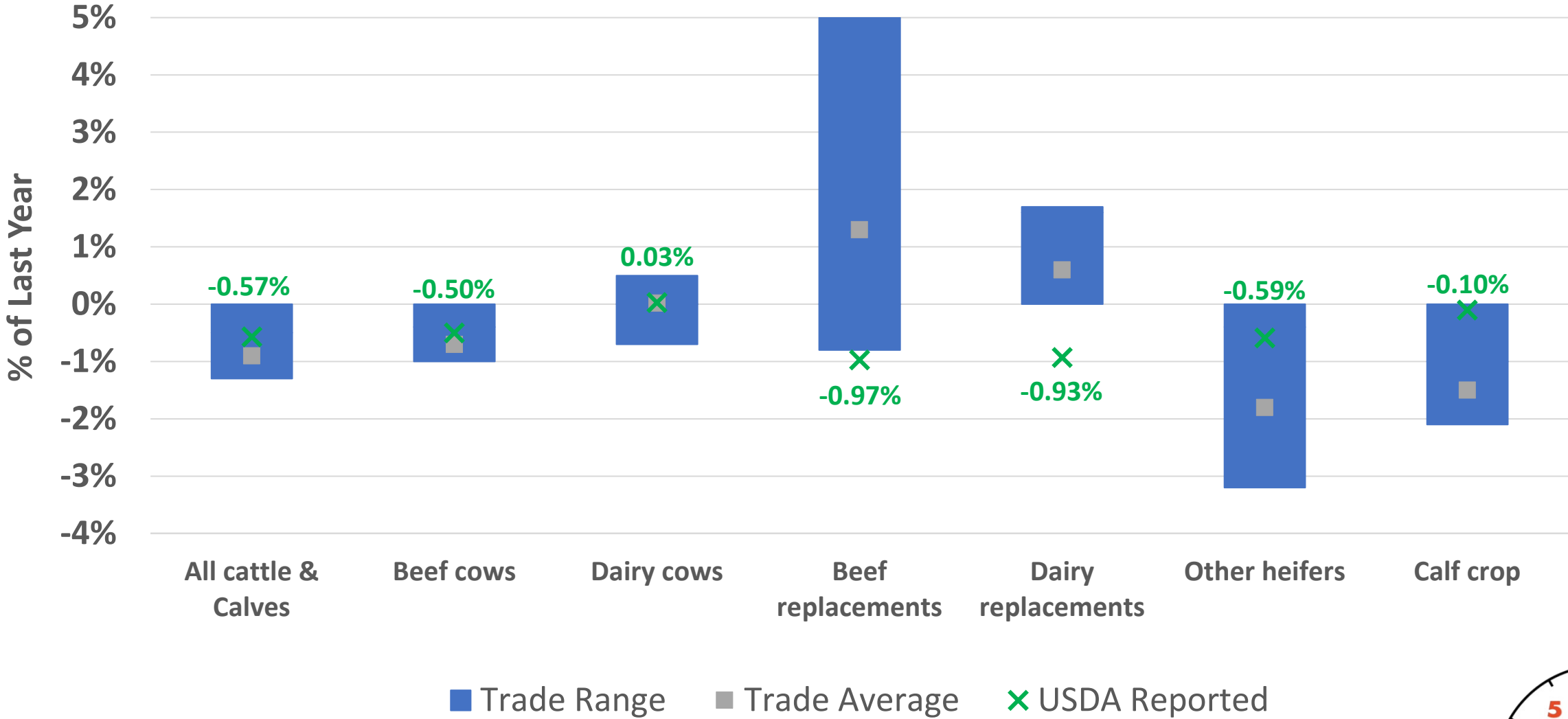
January 1 Inventory of Cattle & Calves in U.S.



Source: USDA-NASS



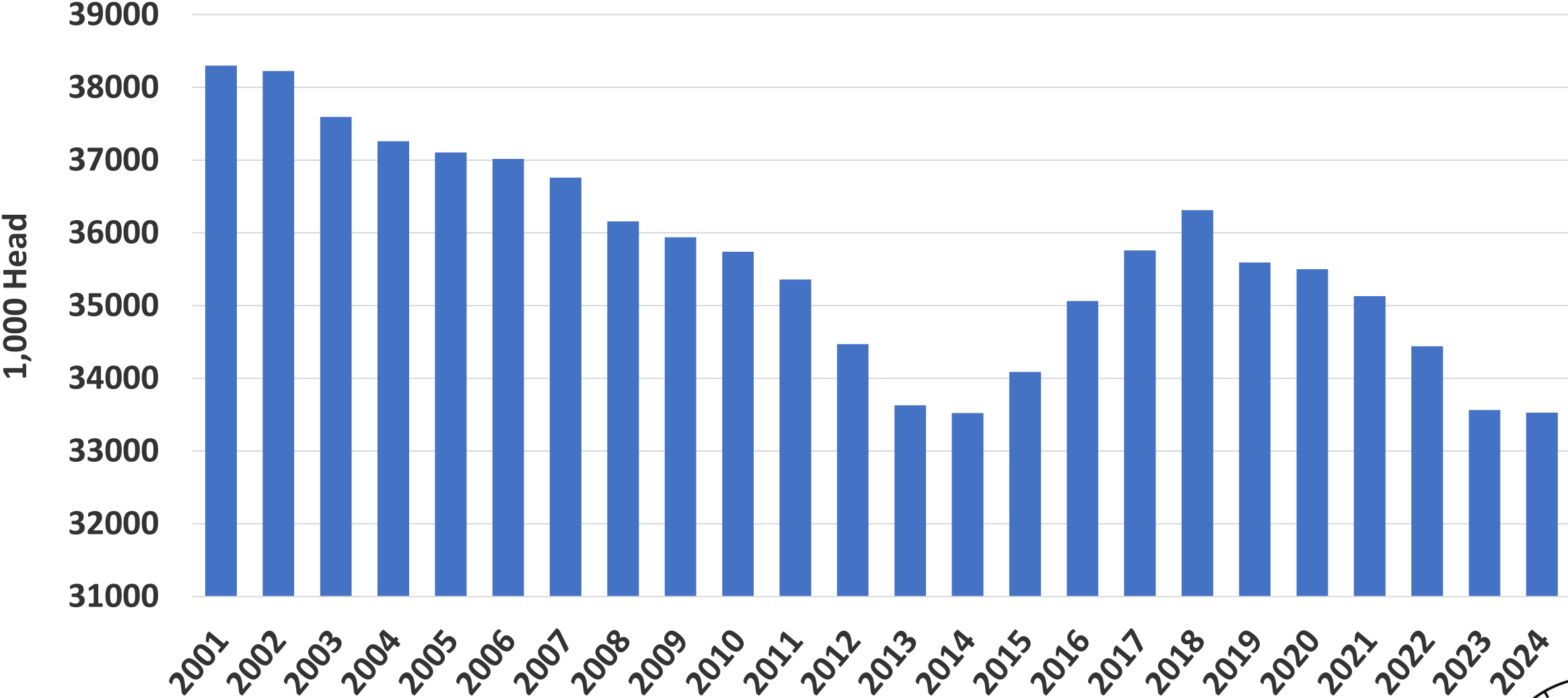
USDA vs. Pre-Report Estimates



Source: USDA-NASS



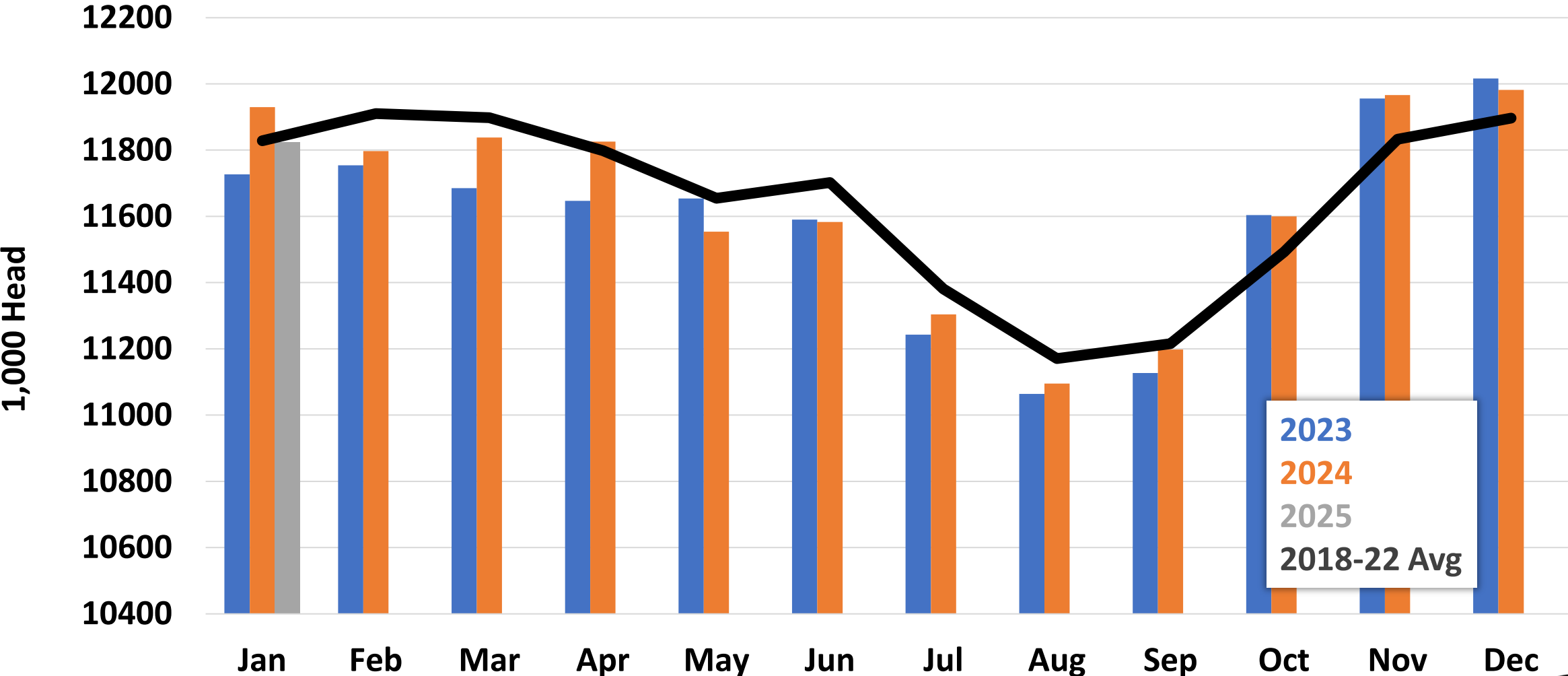
U.S. Calf Crop



Source: USDA-NASS



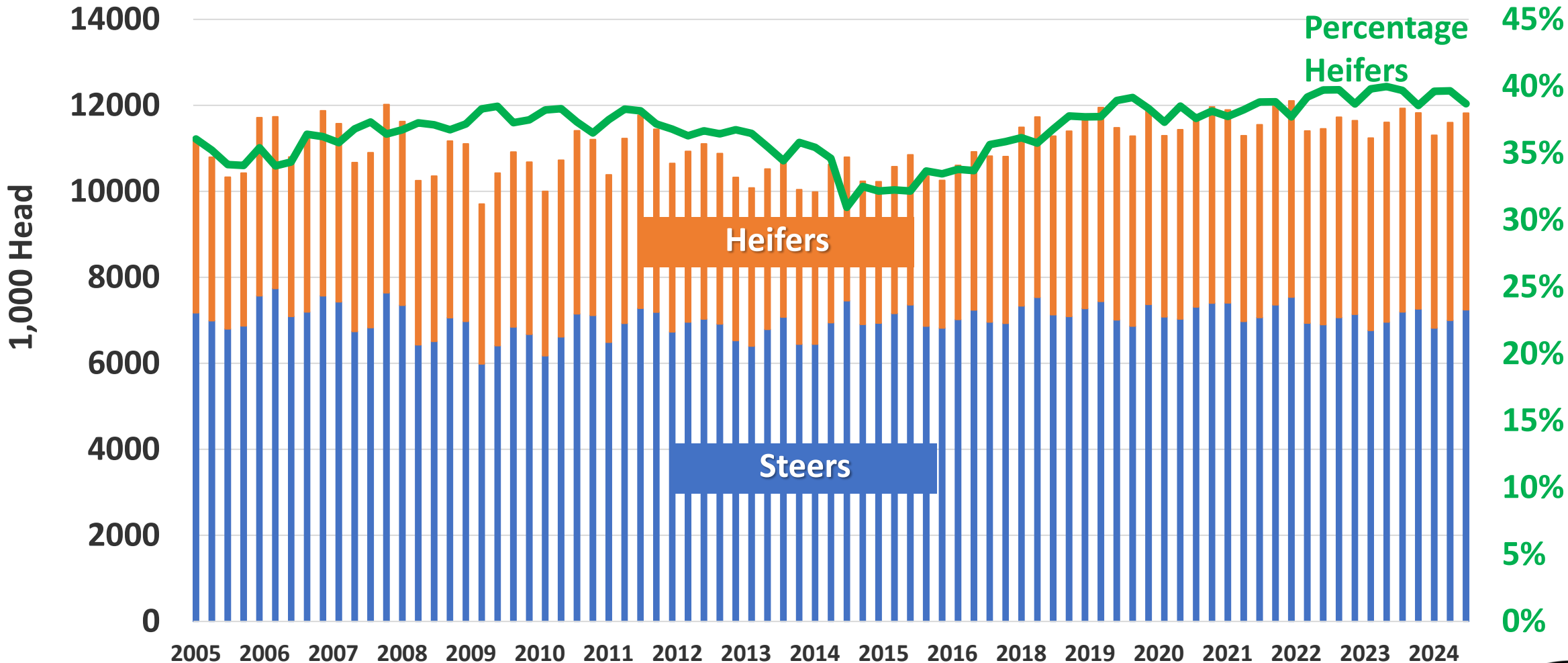
Cattle on Feed in 1,000+ Capacity Feedlots



Source: USDA-NASS



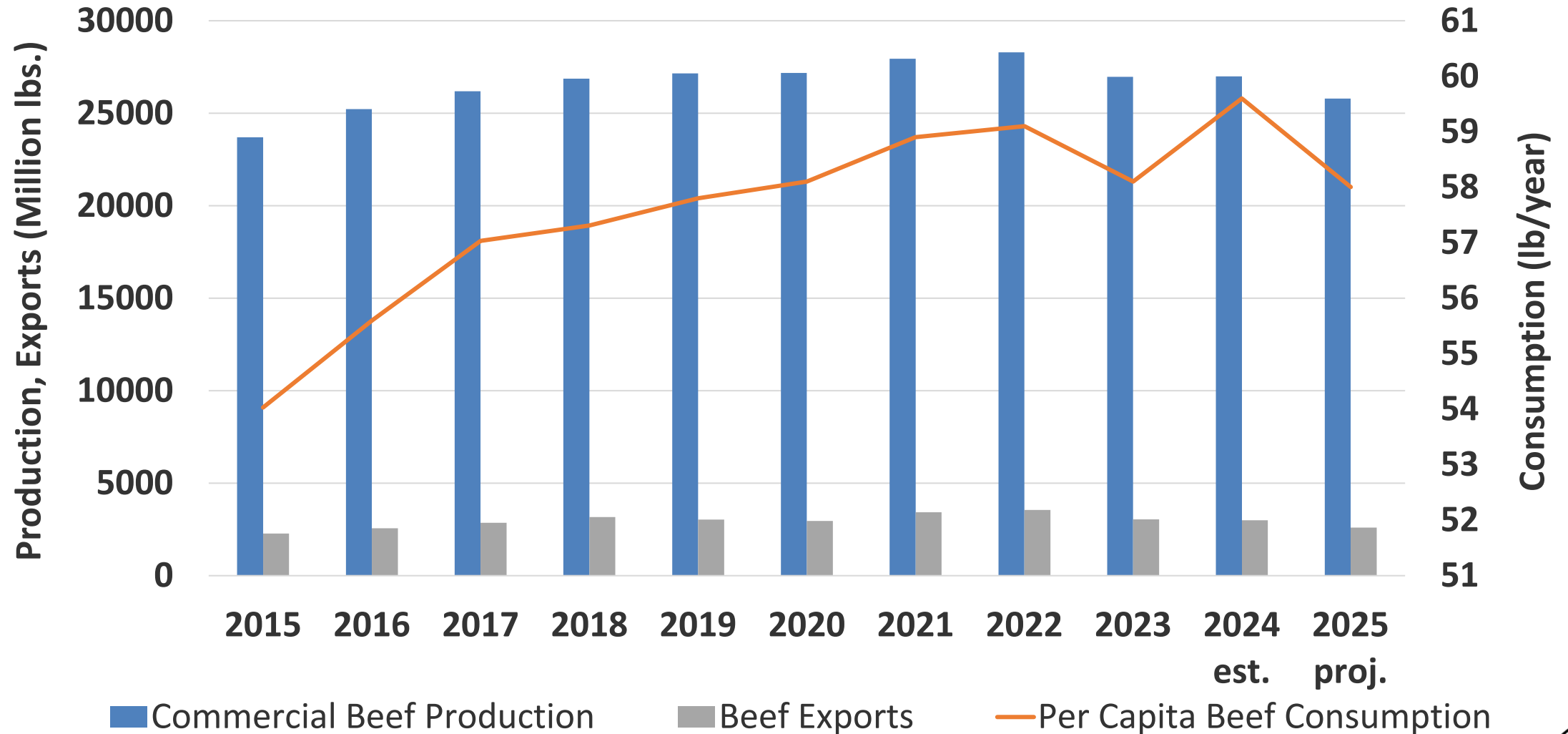
Cattle on Feed in 1,000+ Capacity Feedlots



Source: USDA-NASS



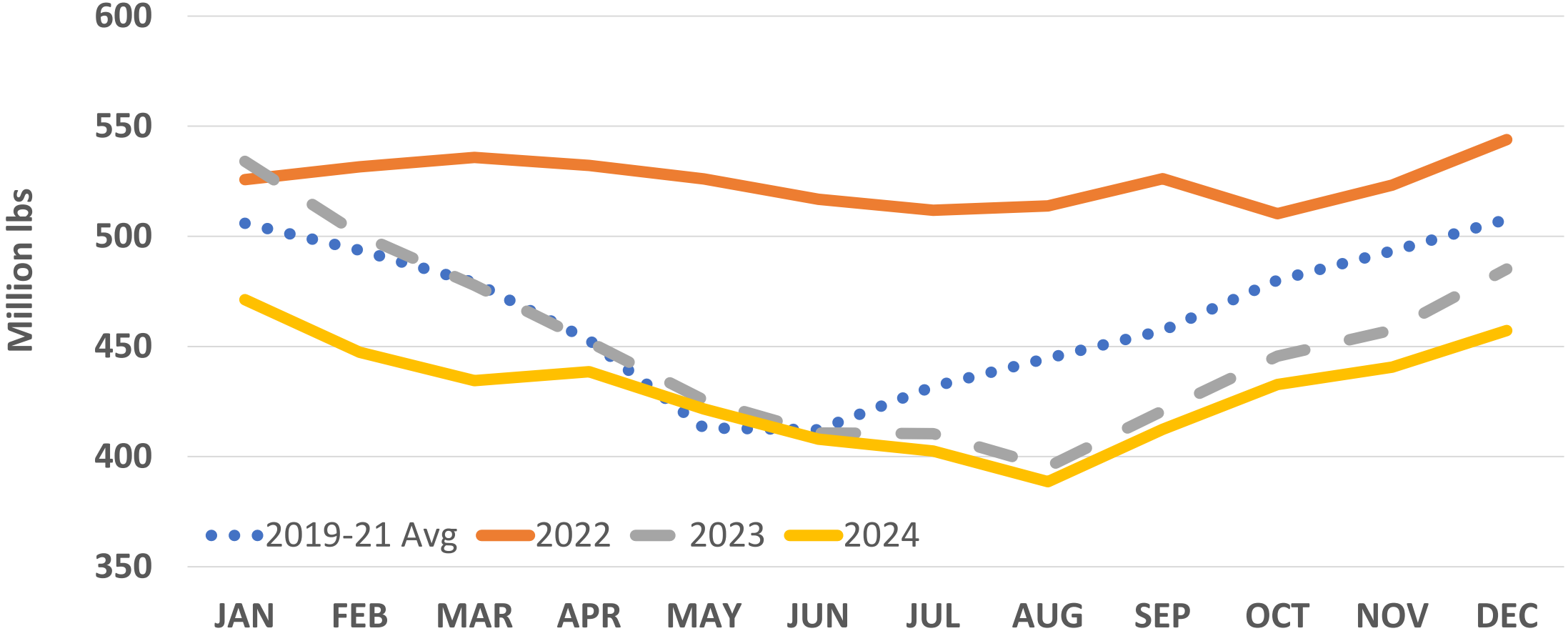
U.S. Beef Production & Disappearance



Source: USDA-ERS



U.S. Frozen Stocks of Beef at End of Month

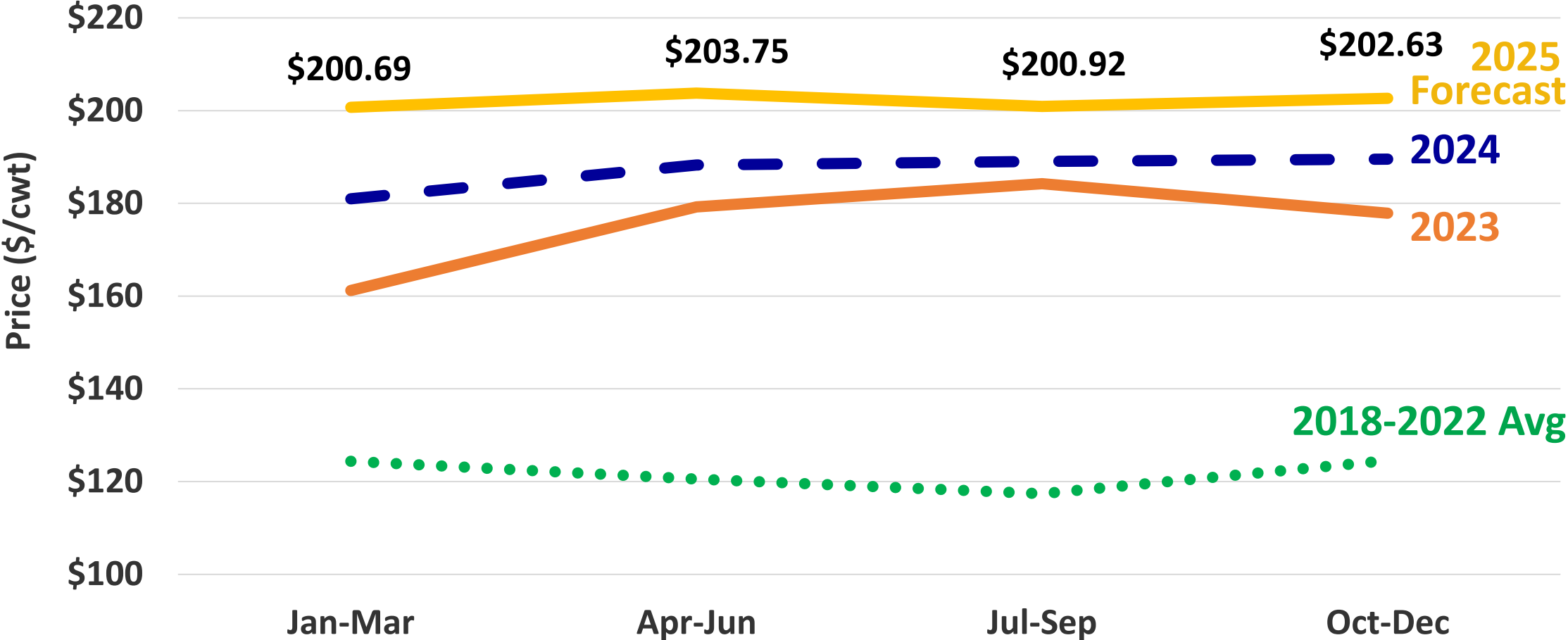


Source: USDA-NASS



Quarterly Average Slaughter Steer Price

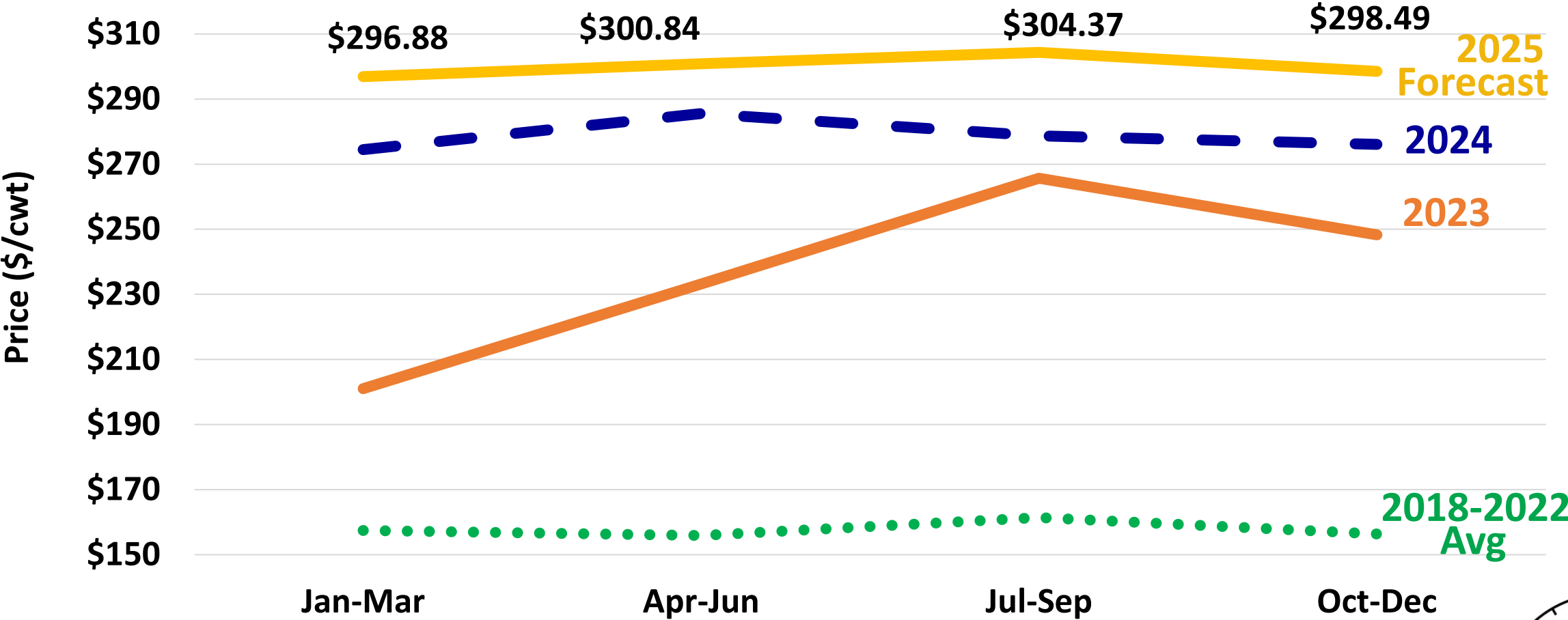
5 Market Weighted Average



Source: USDA-AMS



Quarterly Average Feeder Steer Price, 600-700 lb Southern Plains



Source: USDA-AMS

